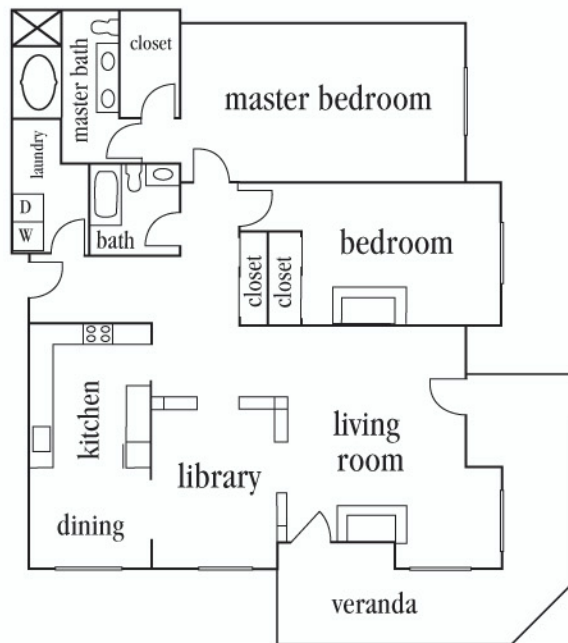
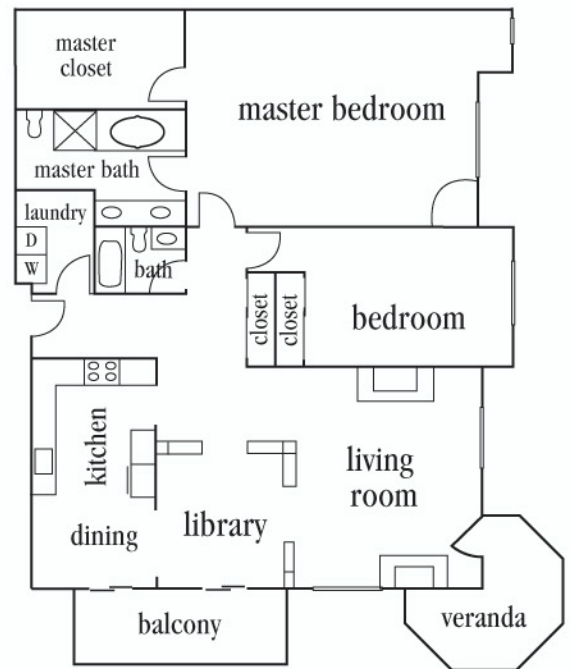


PLAN B: *The Dogwood* 2,100-2,166 square feet. All corner units

- ☞ Elegant formal entries with adjacent vestibules that open to extra-large, formal living and dining rooms
- ☞ Two large bedrooms and two bathrooms, including massive master suites with gas or electric fireplaces and huge walk-in closets with built in shelves; the luxurious master baths include double vanities, large tubs and showers
- ☞ Additional rooms include elegant libraries or cozy family rooms
- ☞ State--of-the-art gas equipped kitchens
- ☞ Private outdoor spaces include extra-large covered verandas and porches
- ☞ Ground level PLAN B has a private outdoor veranda and townhome-style entry



First Floor Plan



Second and Third Floor Plan

*Information deemed reliable, but not guaranteed.
All square footage is approximate. Asking prices are subject to change without notice.*